

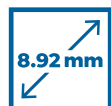
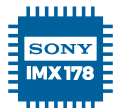
Excelis MPX-6C

HIGH RESOLUTION MICROSCOPY CAMERA

High performance microscopy camera with outstanding color, high-speed USB 3.0 connectivity and advanced **CaptaVision+** imaging software for a wide range of applications.



Key Features



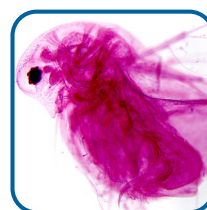
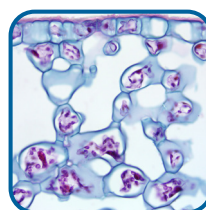
Recommended Applications

BRIGHTFIELD

- Pathology
- Cell biology
- Cytology
- Microbiology
- Environmental science

EDUCATION

- INSPECTION
- DEMONSTRATION
- DOCUMENTATION



Empowering Discovery. Advancing Results.

Excelis MPX-6C

HIGH RESOLUTION MICROSCOPY CAMERA

Key CaptaVision+ Software Features

- Intuitive & customizable user interface
- Simple calibration and measurements
- Advanced control of exposure, gain, color balance, etc.
- Powerful image processing tools
- Intelligent flat field correction
- Real-time fluorescence image synthesis
- Real-time stitching and depth-of-field fusion
- Flexible report generation and data export



MPX-6C shown
on and EXC-350
microscope
(sold separately)

CAMERA & SOFTWARE SPECIFICATIONS

Model	AU-6C-CMOS
Sensor/Model	CMOS • Sony IMX178LQR-C
Sensor Size	1/1.8"; 0.5x C-mount (recommended)
Pixel Size	2.4µm x 2.4µm
Resolution	3072 (H) X 2048 (V); 6.29MP
Frame Rate	40fps (3072 X 2048)
Shutter Mode	Rolling
Exposure Time	0.11ms–12s
Automatic Settings	Exposure, White Balance
Manual Settings	Exposure, Gain, Noise Reduction, Gamma, Flat Field Correction
Color Temperature	2000-15000K
ADC Depth	12Bit
Operating Temperature & Humidity	0-60°C
Camera Size & Weight	68x68x46mm / 330g
Data Interface	USB 3.0, compatible with USB 2.0
PC and Mac Imaging Software (See additional features at right)	CaptaVision+ Imaging Software for PC and Mac OS Advanced Camera Controls: live/still image measurement and annotation; flat field correction; extended depth of focus (focus stacking); image stitching; fluorescence image settings; fluorescence multi-color channel merge; HDR (High Dynamic Range) function Image Types: JPG, PNG, TIF and DICOM (DICOM not available for Mac) TWAIN driver available
System Software Compatibility	Windows 7, 8, 10, 11 (64-bit recommended); Mac OSX 10.4 and higher System Requirements: Intel i5 or better (Quad Core or better); 16GB RAM or more; USB 2.0 high-speed port minimum (USB 3.0 recommended)



Copyright © 2022 ACCU-SCOPE Inc. All rights reserved. Printed in the U.S.A.
ACCU-SCOPE Inc. reserves the right to change and improve specifications
without notice due to technological or manufacturing advances.



v011723