

SKYE2 WiFi™

WiFi & USB MICROSCOPY CAMERA

SKYE WiFi Microscopy Cameras deliver fantastic color images and video directly to your mobile device via WiFi signals without the need for bulky computers. Connect multiple mobile devices to the same camera for simultaneous observation via the SKYE View app. Control via Windows PC app is also supported. SKYE WiFi cameras set the standard for convenience and collaboration.



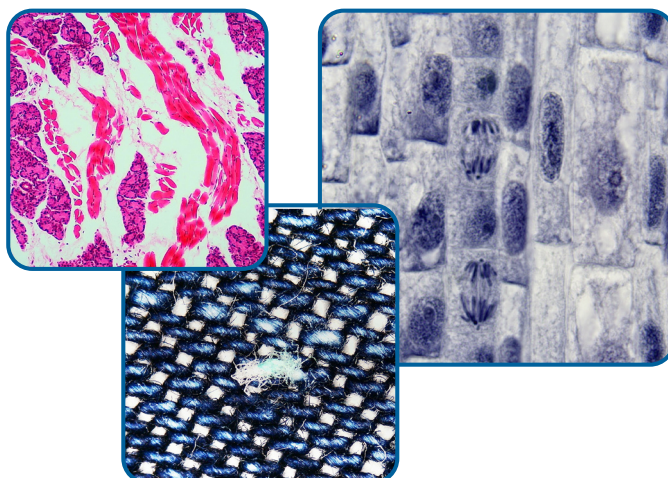
Key Features



Recommended Applications

- EDUCATION
- TRAINING
- DEMONSTRATION

- INDUSTRIAL
- COLLABORATION
- DOCUMENTATION



Empowering Discovery. Advancing Results.

Key SKYE View2 App Features

- Scan QR code to connect to camera
- Calibrate, measure, annotate images
- Capture still images and video
- Control exposure, gain, white balance, contrast, saturation and sharpness
- 1-click export to mobile device album for sharing via social media, SMS, email, etc.

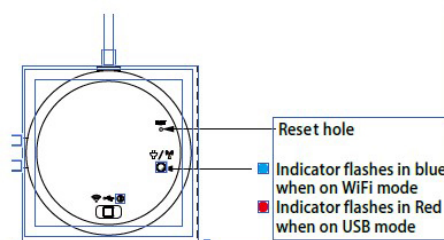
CAMERA SPECIFICATIONS

Model	AU-500-WIFI2
Sensor	OnSemi AR0521 color CMOS
Sensor Size	1/2.5" (5.70mm (H) x 4.28mm (V), Diagonal 7.13mm); 0.35x C-mount recommended
Maximum Resolution	2592x1944 (5,038,848 pixels)
Pixel Size	2.2µm x 2.2µm
Maximum Transmission WiFi or USB Frame Rate	30fps @ 2592x1944, 1920x1080, 1024x768, 640x480
Image/Video Capture	Image Format: JPG, BMP, PNG, TIFF, PDF Image Resolution: 2592x1944, 1920x1080, 1024x768, 640x480 Video Format: MJPG format, AVI file Video Resolution: 1920x1080, 1024x768, 640x640
Exposure Mode	Rolling Shutter
Exposure Compatibility	Real-time auto, Single auto, Manual Adjustment
White Balance	Real-time auto, Single auto, Manual Adjustment
ADC	12-bit, 8-bit RGB to PC
SNR (signal noise ratio)	38.1dB
Spectral Characteristics	380-650nm (during daytime mode)
Binning Modes	1x1, 2x2
Software Interface	DirectShow
Image Transfer (WiFi)	802.11ac (Standard)
Image Transfer (USB)	Micro USB Interface, USB 2.0 DC5.0V 500mA

Uses a standard C-mount
(0.35x recommended)



- 5MP CMOS Camera
- 2.4G/5G WiFi or USB 2.0 (switchable)
- 30 fps with up to 13 simultaneous connections to a single camera
- High sensitivity antenna for long transmission
- WiFi compatibility with Windows, iOS and Android (USB connection for Windows ONLY)
- SKYE View 2 imaging software



CONNECTIVITY SPECIFICATIONS

Wireless Standards	2.4G/5G: IEEE 802.11ac
Operating Frequency Range	2.4G: 2.400-2.4835Ghz 5G: 5.180-5.825Ghz
Power	WiFi: DC 5V 2A power cord USB: Direct-current 5V, power by USB Cable
PC Software Compatibility	Windows 7, 8, 10 & 11 (32 & 64 bit) (PC only, Mac OS not supported) System Requirements: i7 Quad Core or higher; 8GB memory or more; 10GB hard disk free space; standalone graphics card (NVIDIA GPU) WiFi: Internal wireless network card IEEE 802.11ac USB: USB 2.0 or higher (Software Installation) or Internet connection (download from website)
iOS Compatibility	iOS 11.0 or higher Support 5G WiFi (11ac) protocol
Android Compatibility	Android 5.0 or higher Dual-core processor 1.7GHz or higher RAM memory: 3GB or more Storage ROM: 8GB or more Support 5G WiFi (11ac) protocol